

# Form D2

## Accommodation

Kindly complete and return by: **31 August 2020**



**All in CARAVANING 2020**

**25 – 27 September 2020**

Beijing Etrong International Exhibition & Convention Center



**Messe Düsseldorf (Shanghai) Co., Ltd.**

Contact: Ms. Didi Zheng

Tel.: +86(0)21-6169 8358

Fax: +86(0)21-6169 8301

Email: didi.zheng@mds.cn

### Price/room/night--including service charge

#### 1. Pullman Beijing South (5 Star) - Distance from Hotel to Venue 2km (<http://www.accorhotels.com>)

Superior King Room RMB 680 (incl. 1 breakfast)

Superior Twin Room RMB 760 (incl. 2 breakfast)

Executive King Room RMB 900 (incl. 1 breakfast)

#### 2. Holiday Inn Express Beijing Yizhuang (4 Star) - Distance from Hotel to Venue 2km (<http://www.ihg.com>)

Standard King Room RMB 500 (incl. breakfast)

Standard Twin Room RMB 500 (incl. breakfast)

#### 3. Zhong ji Subaru Hotel (3 Star) - Distance from Hotel to Venue 2km

Standard Twin Room RMB 350 (incl. breakfast)

Company name			Booth No.	
Hotel Choice	No. & Type of Rooms			
Guests name	1. _____	2. _____	3. _____	
Check-in/out date	2020 September ____	2020 September ____	Total: ____ night(s)	
Information of credit card	Type:	Holder's Name:		
	Number:	Expiry Date:		
Contact information	Tel:	Mobile:		
	Fax:	E-mail:		

#### Remarks:

- All hotel bookings are subject to availability. Please submit your Reservation Form to the organizer on or before August 31, 2020 should you wish to make your hotel reservation. Reservation made after the deadline can't be guaranteed.
- All booking need be guarantee by the credit card. Please fill in the credit information for booking the hotel.
- If you choose **Holiday Inn Express Beijing Yizhuang**, please transfer full payment to the hotel before 14 days of arrival.
- Cancellation must be made in writing and 7 days prior to arrival. 3 days' advance notice is required to modify a confirmed reservation. Late cancellations will cause a penalty of one night of room charge.

Signature / Seal:

Form

Accommodation

# D2

Kindly complete and return by: **31 August 2020**



**All in CARAVANING 2020**

**25 – 27 September 2020**

Beijing Etrong International Exhibition & Convention Center



**Messe Düsseldorf (Shanghai) Co., Ltd.**

Contact: Ms. Didi Zheng

Tel.: +86(0)21-6169 8358

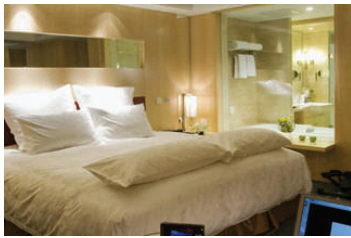
Fax: +86(0)21-6169 8301

Email: didi.zheng@mds.cn

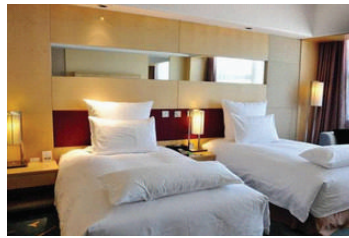
**Price/room/night--including service charge**

**1. Pullman Beijing South (5 Star) - Distance from Hotel to Venue 2km (<http://www.accorhotels.com>)**

Superior King Room RMB 680 (incl. 1 breakfast)



Superior Twin Room RMB 760 (incl. 2 breakfast)

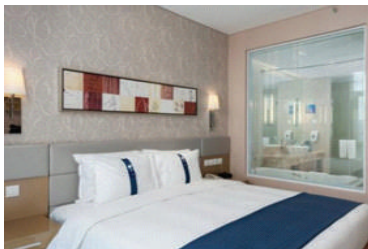


Executive King Room RMB 900 (incl. 1 breakfast)



**2. Holiday Inn Express Beijing Yizhuang (4 Star) - Distance from Hotel to Venue 2km (<http://www.ihg.com>)**

Standard King Room RMB 500 (incl. breakfast)



Standard Twin Room RMB 500 (incl. breakfast)



**3. Zhong ji Subaru Hotel (3 Star) - Distance from Hotel to Venue 2km**

Standard Twin Room RMB 350 (incl. breakfast)

